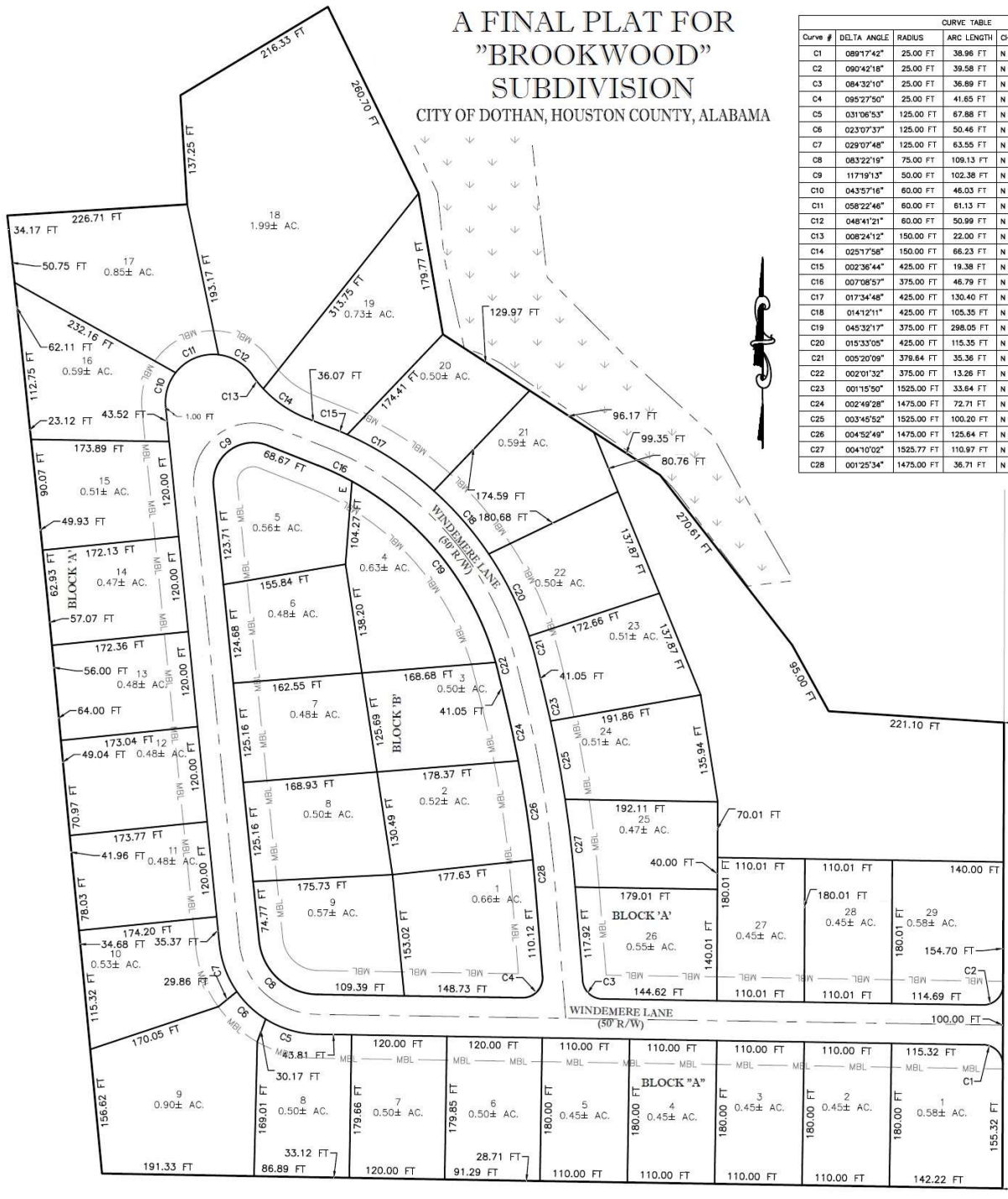


A FINAL PLAT FOR
 "BROOKWOOD"
 SUBDIVISION
 CITY OF DOTHAN, HOUSTON COUNTY, ALABAMA



CURVE TABLE					
Curve #	DELTA ANGLE	RADIUS	ARC LENGTH	CHORD BEARING	CHORD DISTANCE
C1	08917'42"	25.00 FT	38.96 FT	N 44'27'05" W	35.14 FT
C2	090'42'18"	25.00 FT	39.58 FT	N 45'32'59" E	35.57 FT
C3	084'32'10"	25.00 FT	36.89 FT	N 46'49'51" W	33.63 FT
C4	095'27'50"	25.00 FT	41.65 FT	N 43'10'09" E	37.00 FT
C5	031'06'53"	125.00 FT	67.88 FT	N 73'32'29" W	67.05 FT
C6	023'07'37"	125.00 FT	50.46 FT	N 46'25'14" W	50.11 FT
C7	029'07'48"	125.00 FT	63.55 FT	N 20'17'31" W	62.87 FT
C8	083'22'19"	75.00 FT	109.13 FT	N 47'24'47" W	99.76 FT
C9	117'19'13"	50.00 FT	102.38 FT	N 52'55'59" E	85.41 FT
C10	043'57'16"	60.00 FT	46.03 FT	N 16'15'01" E	44.91 FT
C11	058'22'46"	60.00 FT	61.13 FT	N 67'25'02" E	58.52 FT
C12	048'41'21"	60.00 FT	50.99 FT	N 59'02'54" W	49.47 FT
C13	008'24'12"	150.00 FT	22.00 FT	N 38'54'20" W	21.98 FT
C14	025'17'58"	150.00 FT	66.23 FT	N 55'45'25" W	65.70 FT
C15	002'36'44"	425.00 FT	19.38 FT	N 67'06'02" W	19.38 FT
C16	007'08'57"	375.00 FT	46.79 FT	N 64'49'56" W	46.76 FT
C17	017'34'48"	425.00 FT	130.40 FT	N 57'00'16" W	129.89 FT
C18	014'12'11"	435.00 FT	105.35 FT	N 41'06'47" W	105.08 FT
C19	045'32'17"	375.00 FT	298.05 FT	N 38'29'19" W	290.26 FT
C20	015'33'05"	425.00 FT	115.35 FT	N 26'14'09" W	115.00 FT
C21	005'20'09"	379.64 FT	35.36 FT	N 16'04'36" W	35.34 FT
C22	002'01'32"	375.00 FT	13.26 FT	N 14'42'24" W	13.26 FT
C23	001'15'50"	1525.00 FT	33.64 FT	N 13'03'43" W	33.64 FT
C24	002'49'28"	1475.00 FT	72.71 FT	N 12'16'53" W	72.70 FT
C25	003'45'52"	1525.00 FT	100.20 FT	N 10'32'52" W	100.18 FT
C26	004'52'49"	1475.00 FT	125.64 FT	N 08'25'44" W	125.60 FT
C27	004'10'02"	1525.77 FT	110.97 FT	N 06'34'53" W	110.94 FT
C28	001'25'34"	1475.00 FT	36.71 FT	N 05'16'33" W	36.71 FT

JOHN D. ODUM ROAD
 (R/W VARIES)

LUCY LANE
 (60' R/W)

BURBANK STREET
 (60' R/W)